

SPECIFICATION OF FBCA SERIES

FEATURES

Use flat wire in it and could endure higher current (6Amps).

It is mounted in the boards with surface mounting equipment.

APPLICATIONS

1. Computer products.
(Mother board , Hard Disk , TV card..Etc.)
2. Communication products.
(like : PAGER , Cordless Phone..Etc.)
3. Modem , OA products , power supplier..Etc.
4. Countermeasures for complying with CE 、 FCC 、 VDE or VCCI radiated emissions.



ORDERING CODE

FBCA-K5B-302540-L-T

(1) (2) (3) (4)(5)

- (1) PRODUCT TYPE CODE
- (2) MATERIAL CODE
- (3) SIZE CODE
- (4) DESIGN CODE
- (5) TAPING

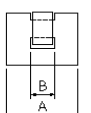
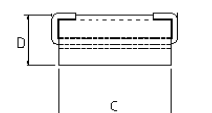
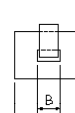
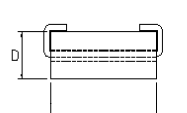
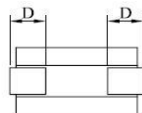
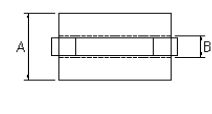
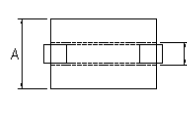
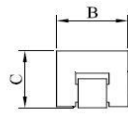
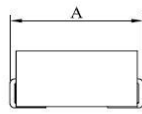


FIG 1

FIG 2

FIG 3

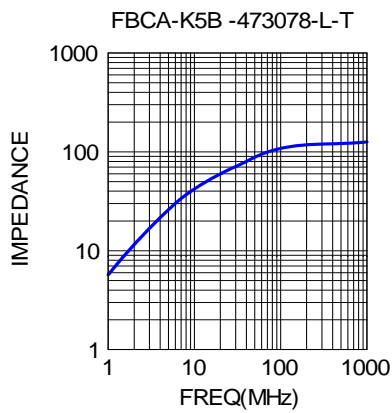
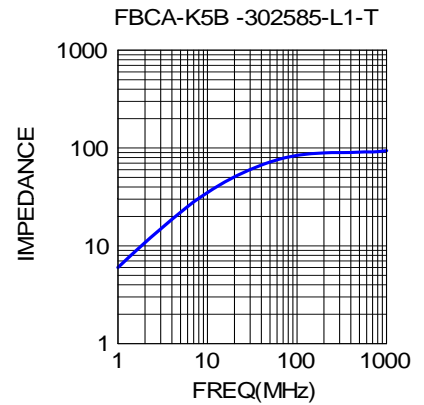
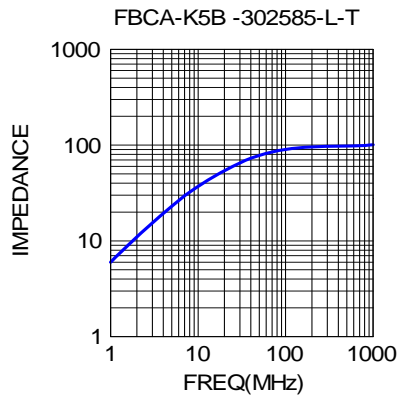
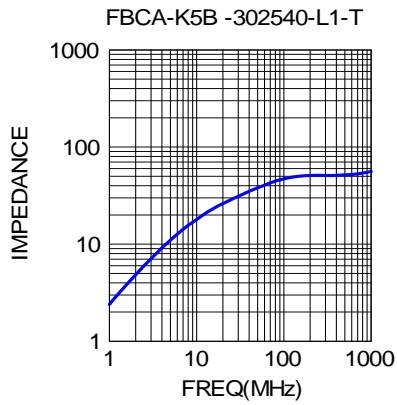
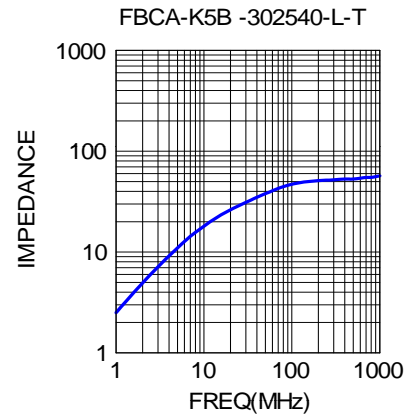
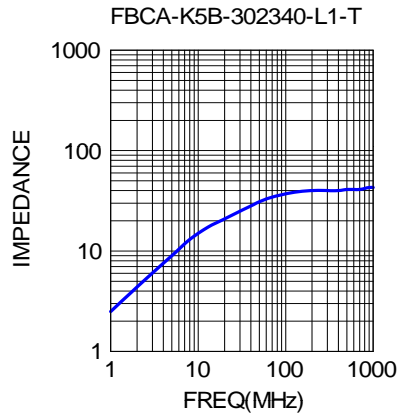
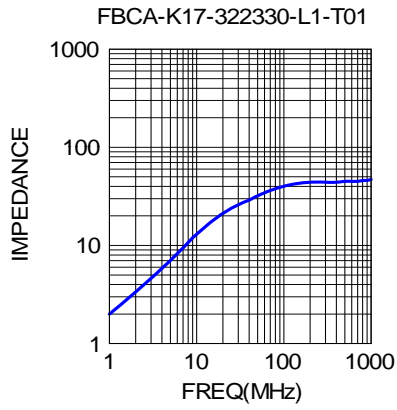
SHAPE & DIMENSIONS

UNIT:mm

| ORDERING CODE | A | B | C | D | RDC | IMPEDANCE | | IDC | FIG |
|------------------------|-----------|-----------|-------------|-----------|---------|-----------|--------|--------------------|-----|
| | | | | | (mΩ)max | 25MHz | 100MHz | ΔT:40°C (mA)max | |
| FBCA-K17-322330-L1-T01 | 3.08±0.20 | 2.90±0.20 | 2.20±0.15 | 0.80±0.30 | 0.6 | 24 | 40 | 21000 | 1 |
| FBCA-K5B-302340-L1-T | 4.50±0.40 | 3.00±0.20 | 2.3+0(-0.4) | 1.50±0.50 | 4 | 23 | 37 | 6000 | 1 |
| FBCA-K5B-302540-L-T | 3.00±0.20 | 1.45±0.10 | 4.00±0.25 | 2.55±0.15 | 4 | 29 | 47 | 6000 | 2 |
| FBCA-K5B-302540-L1-T | 4.50±0.40 | 3.00±0.20 | 2.60±0.25 | 1.50±0.15 | 4 | 29 | 46 | 6000 | 1 |
| FBCA-K5B-302585-L-T | 3.00±0.20 | 1.45±0.10 | 8.50±0.30 | 2.55±0.15 | 6 | 60 | 90 | 6000 | 2 |
| FBCA-K5B-302585-L1-T | 3.00±0.30 | 1.50±0.50 | 8.50±0.40 | 2.50±0.30 | 6 | 56 | 84 | 6000 | 3 |
| FBCA-K5B-473078-L-T | 4.75±0.20 | 1.45±0.10 | 7.80±0.30 | 3.00±0.15 | 6 | 66 | 108 | 6000 | 2 |

※All the data listed in this catalogue are for reference only, King Core reserves the right to alter or revise the specifications without prior notification.

WOUND CHIP BEADS → FBCA SERIES



※IDC: Based on Temperature Increase 40°C

※All the data listed in this catalogue are for reference only, King Core reserves the right to alter or revise the specifications without prior notification.